



SIZE
2x2, 2x4
WATT
20W, 30W, 40W, 50W
CCT
3500K / 4000K / 5000K
DIMMING
0-10V
CRI
Ra>80
LUMINOUS EFFICACY (lm/W)
125 lm/w
INPUT VOLTAGE
AC100-277V
IP RATING
IP20
STORAGE TEMPERATURE
-22°F~130°F
WORKING TEMPERATURE
-4°F~104°F
PF
0.90
THD
15%
DRIVER EFFICIENCY
87%

LED CENTER BASKET TROFFER

TE-CBTA - SERIES

DESCRIPTION

schaezer® presents the TK-CBT4 LED Center Basket Troffer Luminaire, designed for versatile lighting needs in industrial and commercial settings. Featuring a high-quality isolated driver and 0-10V dimming capability, this LED troffer ensures flicker-free operation and offers optional sensor compatibility for enhanced energy efficiency. Operating seamlessly at AC100-277V, it provides selectable color temperatures of 3500K, 4000K, and 5000K with a CRI Ra>80 and impressive luminous efficacy of 125lm/w. Its durable design includes an IP20 rating, protecting against dust and ensuring reliability in temperatures from -4°F to 104°F.

Ideal for offices, schools, hospitality venues, healthcare facilities, and various industrial applications, the TK-CBT4 LED troffer enhances spaces with its easy installation featuring a snap-on lens and improved aesthetics.

Backed by a 5-year limited warranty and ETL certification, with DLC application underway, the TK-CBT4 meets rigorous safety and performance standards for both damp and dry locations. It promises long-term durability and peace of mind, making it a trusted choice for efficient and reliable lighting solutions in demanding environments.



LED CENTER BASKET TROFFER

TECBTA SERIES

Applications

Ideal for lighting offices, schools, hospitality, healthcare & other industrial applications. Easy to install, Snap-on lens and improved aesthetics.

Quick Ship:

TECBTA2430W40KD1WP

TECBTA2230W40KD1WP

TECBTA2440W50KD1WP

TECBTA2240W40KD1WP

TECBTA2440W40KD1WP

TECBTA2440W50KD1WP

Controls / Dimming

High quality isolated driver; 0-10V dimming; Flicker free. Optional sensor and Emergency Battery Backup available. . .

Warranty

5 Years Limited Warranty. See warranty documentation for more information.

Installation / Mounting

Luminaire Installs in Lay-in T-Bar Grid or Drop-in Ceiling Mount, Cable Install or Surface

Mount Install. Beam Angle is 150°. Instant w/NO Humming.

Ordering Information

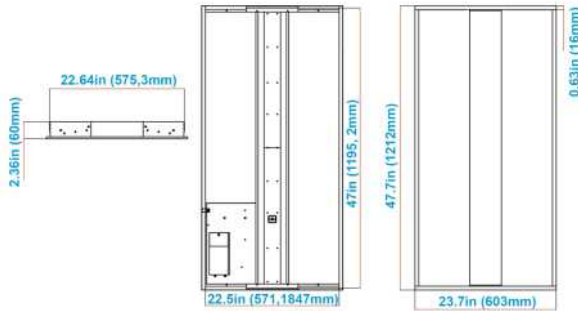
Example: **TECBTA2430W40KD1WP**

TE	CBTA	24	30W	40K	D1	Voltage	W	J		
Code	Series	Size	Nominal Wattage		Color Temp		Dimmable	Voltage	Housing Color	Version
TE	CBTA Center Basket Troffer	22 2x2	20W	20 Watt	35K	3500K	D1 Dimmable N1 Non-Dimmable	Blank 100-277V	W White	J Standard
		24 2x4	30W	30 Watt	40K	4000K			B Black	P Premium
			40W	40 Watt	50K	5000K			G Gray	
			50W	50 Watt						
Available Options										
Controls/Mounting/Options										
							EM	Emergency 90 Min. Battery Backup		
							SMK	Surface Mounting Kit		
							CMK	Cable Mount Kit		
							N	No Sensor		
							P	Microwave Sensors		

LED CENTER BASKET TROFFER

TECBTA SERIES

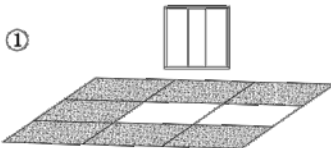
Product Dimension



TECBTA22YY WXXXD1WP (2ft x 2ft)	23.74" (L)	23.74" (W)	2.36" (H)
TECBTA24YYWXXXD1WP (2ft x 4ft)	47.74" (L)	23.74" (W)	2.36" (H)

Installation Instructions

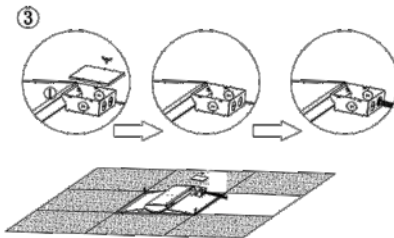
Please read the instructions carefully before installation



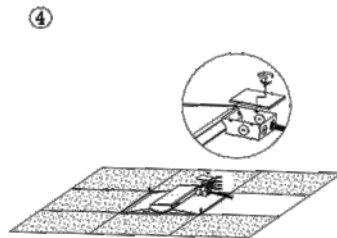
Step 1. Remove two boards.



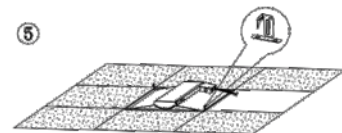
Step 2. Put the lamp on ceiling.



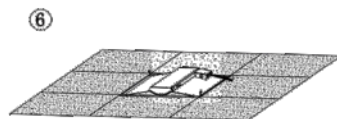
Step 3. Open the cover of junction box;
Knock off the piece of side and let
the wire conduit through junction box.



Step 4. Connect the wires with P2,
Refer to wiring diagram as below.



Step 5. Lock the lamp on framework.



Step 6. Put another board back, check
the lamp must be placed firmly.