



SIZE
6 INCH
WATT
15W
CCT
2700K, 3000K, 3500K, 4000K, 6000K
DIMMABLE
TRIAC
CRI
80+
LUMINOUS EFFICACY (Lm/W)
90 Lm/W
INPUT VOLTAGE
120V
OPERATING TEMPERATURE
-20°C ~ + 40°C
LIFE SPAN
50,000+ Hrs



LED DISK LIGHT 5CCT ADJUSTABLE

TK-DSK1™ SERIES

DESCRIPTION

schaezer® presents the LED DISK LIGHT 5CCT ADJUSTABLE, a versatile and efficient lighting solution designed to meet various illumination needs. This innovative product offers multiple colour temperature options, making it ideal for diverse applications in residential and commercial settings.

The LED DISK LIGHT 5CCT ADJUSTABLE is compatible with most TRIAC LED dimmers, allowing for seamless dimming from 10% to 100%. It features five selectable colour temperatures (2700K, 3000K, 3500K, 4000K, and 6000K), eliminating the hassle of choosing the right one before installation. The aluminum cover provides excellent corrosion protection and rust prevention, ensuring long-lasting durability. With an input voltage of 120V, a luminous efficacy of 90 Lm/W, and a color rendering index (CRI) of 80+, this light delivers bright and accurate illumination. It is rated IP44, suitable for wet locations, and operates efficiently within a temperature range of -20°C to +40°C. The product has a lifespan of over 50,000 hours, ensuring reliable performance.

This adaptable light fixture is perfect for use in wet locations such as closets, kitchens, bathrooms, and porches. Its flexible design makes it suitable for various applications, providing reliable and efficient lighting solutions in different environments.

Backed by a 3-Year Limited Warranty, the LED DISK LIGHT 5CCT ADJUSTABLE ensures customer satisfaction and peace of mind. It complies with ETL Listings, Energy Star, ES, FCC, is AIR Tight, and IC Rated, meeting high safety and efficiency standards.



LED DISK LIGHT 5CCT ADJUSTABLE

TK-DSK1 SERIES

Applications

Ideal for wet locations, perfect for use in closets, kitchens, bathrooms, and porches

Quick Ship:

TK-DSK1-R6-15W-5CCT

Controls / Dimming

Compatible with most TRIAC LED dimmers, offering seamless dimming from 10% to 100% : Offers 5 selectable colour temperatures, eliminating the need to worry about choosing the right one Made with an Aluminum cover for corrosion protection and rust prevention

Warranty

3 Years Limited Warranty

Installation / Mounting

The installation process is straight forward and offers a range of mounting possibilities. The slim profile allows to be mounted under joists or duct work, including two spring loaded clips to attach some ceiling material

Ordering Information

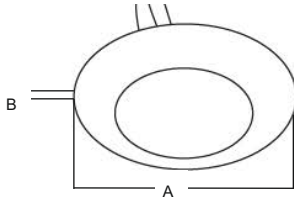
Example: TK-DSK1-R6-15W-5CCT

TK	DSK1	R6	15W	5CCT	OPTION
<input type="text"/>	<input type="text"/>	<input type="text"/>	<input type="text"/>	<input type="text"/>	<input type="text"/>
Code	Series	Diameter	Watts	Color Temp (Color Temp Selectable)	Voltage
TK	DSK1-LED Disk Light Gen 1	R6-6inch	15W - 15 Watts	2700K 3000K 5CCT-4000K 5000K 6000K	Blank 120V Dimming D-Traic Dimming

LED DISK LIGHT 5CCT ADJUSTABLE

TK-DSK1 SERIES

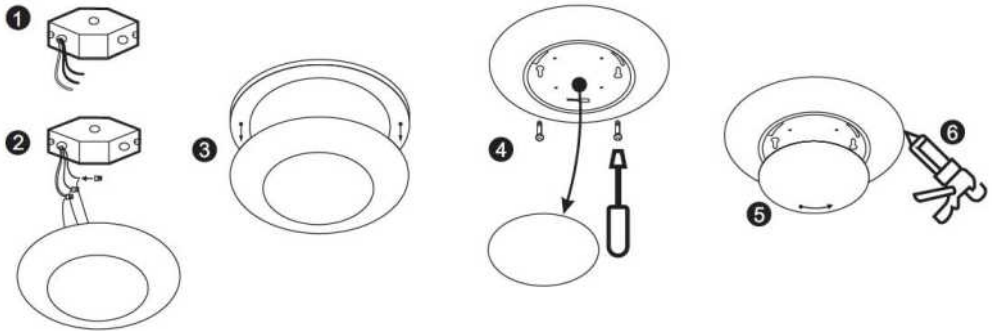
Dimensions



Part Number	A (Diameter)	B (Height)
TK-DSK1-R6	7.40 inches	1.25 inches

Installation

SURFACE MOUNT INSTALLATION



- Step 1: Prior to installation, please install two screws (furnished) into the junction box. Do not drive screws completely to the end of the junction box.
- Step 2: Connect supply wires to wires in fixture wiring box with proper size wire nuts or push wires into "push-in" connector, Connect white to white, black to black, and green or bare copper wire to bare copper wire.
- Step 3: Connect supply wires to wires in fixture wiring box with proper size wire nuts or push wires into "push-in" connector, Connect white to white, black to black, and green or bare copper wire to bare copper wire.
- Step 4: The ground wire at the service junction box may need to be secured to a ground screw. With a Phillips screwdriver, attach the disk light tightly to the j-box.
- Step 5: Complete the installation by twisting the disk on the disk light aluminum enclosure and lock the disk in place.
- Step 6: For external use only, recommend applying waterproof silicone to seal around trim and ceiling.