


WATT

75W, 100W, 150W, 200W

CCT

3000K/4000K/5000K

DIMMABLE

0-10V

CRI

70+

LUMINOUS EFFICACY (Lm/W)

135 Lm/W

INPUT VOLTAGE

120-277 VAC & 347-480 VAC

IP RATING

Ip65

PF

92.3% at 277v

LIFE SPAN

50,000+ Hrs

LED GAS STATION CANOPY LIGHT

TK-CAN3TNC™ SERIES

DESCRIPTION

schaezer® presents the LED Gas Station Light, a state-of-the-art lighting solution engineered for superior performance and durability in diverse outdoor and commercial environments. Featuring advanced 1-10V dimming capability and high temperature silicone gaskets, this fixture ensures customizable brightness and enhanced weather resilience. Its precision die-cast aluminum housing provides robustness, complemented by a clear polycarbonate lens with a shatterproof, non-yellowing coating and a self-sealing gasket for long-term reliability.

Operating seamlessly on input voltages from 120-277VAC to 347-480VAC, the LED Gas Station Light offers versatility with selectable color temperatures (3000K, 4000K, 5000K), achieving an impressive luminous efficacy of 137 Lm/W and a high color rendering index (CRI) of 70+. With an outstanding power factor of 92.3% at 277V and an IP65 rating for dust and water resistance, it excels in harsh outdoor conditions.

Perfect for illuminating parking garages, canopies, storage areas, outdoor aisles, gas stations, walkways, and entryways, this fixture prioritizes both optimal visibility and safety. Supported by a 5-year limited warranty and compliant with ETL Listings, DLC Listings, RoHS regulations, and surge protection standards, the LED Gas Station Light guarantees reliability and adheres to the highest industry benchmarks for quality and performance. Illuminate your commercial spaces confidently with Schaezer's LED Gas Station Light, designed to deliver efficiency and longevity in every lighting application.



LED GAS STATION CANOPY LIGHT

TK-CAN3TNC SERIES

Applications

Ideal for Parking garages, Canopies, Storage areas, Outdoor aisles, Gas stations, Walkways, Entryways, Etc

Quick Ship:

TK-CAN3TNC-200W-50K-UNV-MSP-JK

TK-CAN3TNC-200W-50K-HVU-MSP-JK

Controls / Dimming

1-10V dimmable. High temperature silicone gaskets. Precision die-cast aluminum housing. Clear Polycarbonate lens with Shatterproof, Non-Yellowing, Self-Sealing Gasket. Extra photocell sensor & Motion Sensor available

Warranty

5 Years Limited Warranty

Installation / Mounting

The installation process is straight forward and offers a range of mounting possibilities. Mounts to all square and round poles if optional Universal Pole Adaptor is used.

Ordering Information

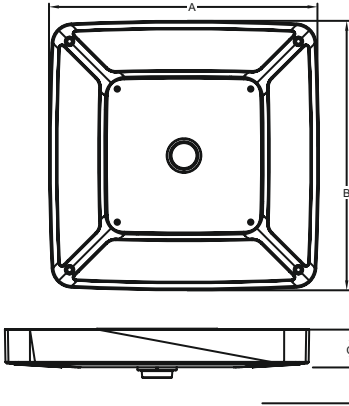
Example: TECBTA2430W40KD1WP

TK	CBTA	200W	50K	UNV	MSP	JK	Options
<input type="text"/>	<input type="text"/>	<input type="text"/>	<input type="text"/>	<input type="text"/>	<input type="text"/>	<input type="text"/>	<input type="text"/>
Code	Series	Watts	Color Temp	Voltage	Motion Sensor	Mounting	Dimmings
TK	CAN3TNC- Canopy Light Series	75W-75Watts 100W-100Watts 150W-150Watts 200W-200Watts	30K 3000K 40K 4000K 50K 5000K	UNV-120-277VAC HVU-347-480VAC	[Blank] - NO Motion sensing MSP - Integrated Sensor for ON/OFF Operation, 8' 50" Mounting Height	JK - Junction Box Kit PM - Pendant Mount SM - Surface Mount UBM - U Bracket mounting	1-10V Dimming Resistor Dimming Pwm Three-in-one Dimming (standard) Dimmings BK - Black WH - White BR - Bronze

LED GAS STATION CANOPY LIGHT

TK-CAN3TNC SERIES

Dimensions



Part Number	A (Length)	B (Width)	C (Height)
TK-CAN3TNC	15.9" Inches	15.9" Inches	2" Inches

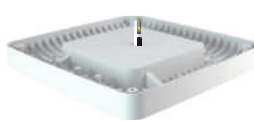
Optional Accessories

Single Person Installation (Mounting Options)

This design allows you to easily and securely install the product by sliding and locking it in place.



Junction Box Kit



Surface Mount



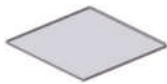
Pendant Mount



U Bracket mounting

Retrofit Kits

All retrofit kits are shipped separately as accessories:



Beauty Plates

A wide selection with and without holes for 12" and 16" canopy decks.



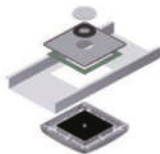
Junction Box Kit

Enables installation in openings from 4" to 6.5" in diameter. [Includes J-Box and stem]

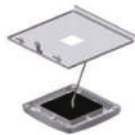


Conduit stem

Helpful when using an existing junction box. [Includes stem and conduit nuts]



For 16" and 12" Deck Panels with larger openings [Includes all necessary plates and hardware]



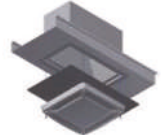
UNV Universal 2x2

[Includes all required plates and hardware]



RECU Richmond

[Includes all required plates and hardware]



Surface Mount Box

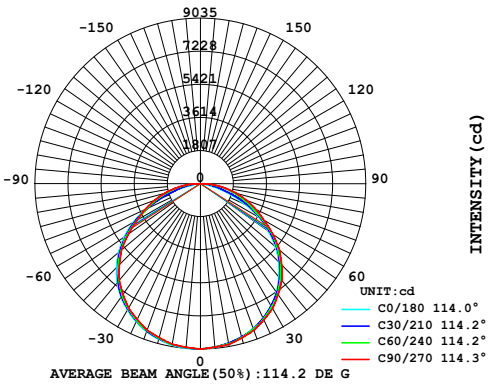
[Includes box and required hardware]

LED GAS STATION CANOPY LIGHT

TK-CAN3TNC SERIES

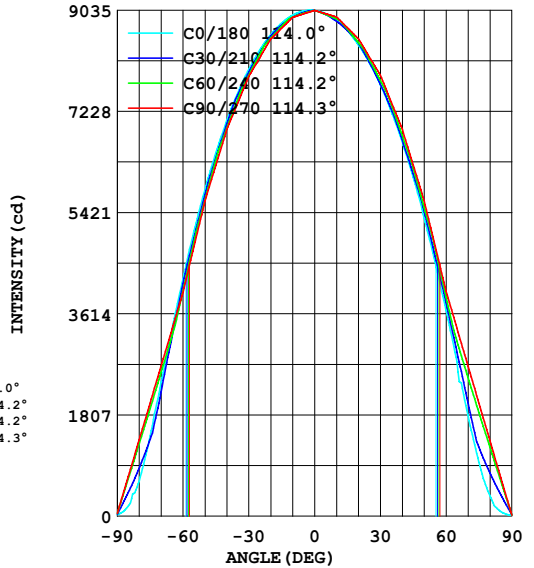
Photometrics

LUMINOUS INTENSITY DISTRIBUTION



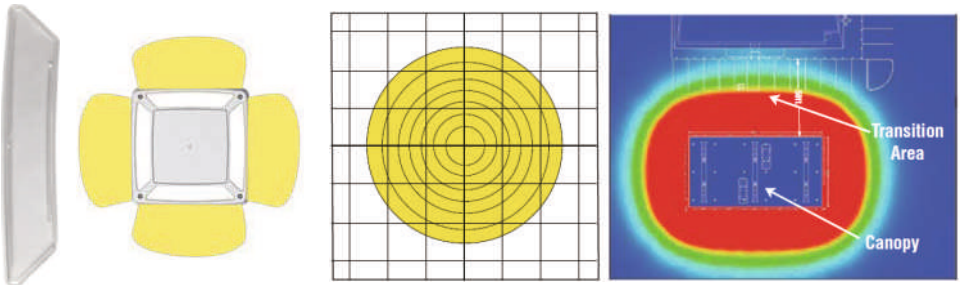
TK-CAN3TNC-200W-50K-UNV

LUMINOUS INTENSITY DISTRIBUTION



Standard Symmetric Light Distribution

A self-sealing gasket that is durable, clear, and light, and distributes light evenly under the canopy



LED GAS STATION CANOPY LIGHT

TK-CAN3TNC SERIES

Finishes Available

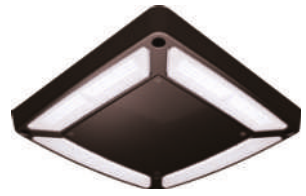
You can choose from three different colors of durable coating for the lighting that match your surroundings. For more Custom colors, contact us



White



Black



Bronze

Installation

IMPORTANT: READ INSTRUCTION CAREFULLY BEFORE INSTALLING. KEEP THESE INSTRUCTIONS FOR FUTURE REFERENCE.

CAUTION: DO NOT USE ELECTRIC GENERATOR TO TEST THE LED FIXTURE.

CAUTION: TO AVOID ELECTRICAL SHOCK AND DAMAGE, PLEASE DO NOT INSTALL WHEN RAINING.

WARNING: TO PREVENT ELECTRIC SHOCK OR RISK OF FIRE, THE INSTALLATION MUST BE COMPLETED BY OPERATOR WITH PROFESSIONAL ELECTRICAL KNOWLEDGE.

WARNING: PLEASE WEAR GLOVES TO AVOID INJURY DURING INSTALLATION.

WARNING: DURING OR AFTER INSTALLATION, IF THERE ARE SITUATIONS SUCH AS SMOKE OR FIRE IN THE WIRES OR FIXTURES, PLEASE TURN OFF POWER IMMEDIATELY AND CONTACT A QUALIFIED ELECTRICIAN.

SUITABLE FOR OUTDOOR USE.

MIN 750C (1670F) SUPPLY CONDUCTOR.

THIS PRODUCT MUST BE INSTALLED IN ACCORDANCE WITH THE APPLICABLE INSTALLATION CODE BY A PERSON FAMILIAR WITH THE CONSTRUCTION AND OPERATION OF THE PRODUCT AND THE HAZARDS INVOLVED.

LED GAS STATION CANOPY LIGHT

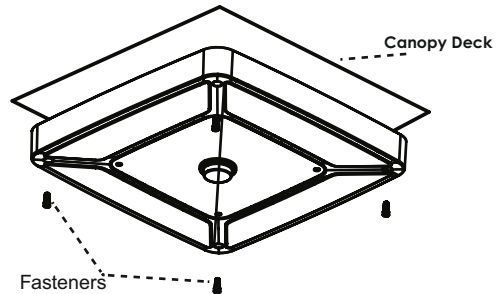
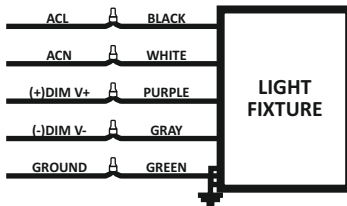
TK-CAN3TNC SERIES

Wiring Diagram

3 DIFFERENT DIMMING FUNCTIONS ARE AVAILABLE IN THIS LIGHT FIXTURE:

1. Constant current can be achieved by HOV DC dimming.
2. PWM signal dimming.
3. Variation of resistance unit dimming.

Note: Do not connect DIM V+ (purple)/ DIM V- (gray) to line voltage or supply ground.



Step 1: Below Canopy

1. Drill 4" hole in canopy deck to receive luminaire hub (position of hole is center of luminaire).

2. Align fixture to 4" hole in canopy.

3. Attach luminaire to canopy deck with 4 suitable fasteners*.

*Fasteners provided for single deck steel canopies specifically. Suitability, strength, and installation workmanship of fasteners for any canopy/surface is the ultimate responsibility of the installing contractor. Other suitable fasteners may be required--provided by others.

Step 2: Above Canopy

1. Install locking collar with gasket using provided washers and bolts.

2. Assemble conduit and wiring box to luminaire.

3. Seal 1/2" conduit threads preventing water entry into wireway (sealant by others).

4. Seal fastener penetrations on top side of canopy deck preventing water from leak-ing to bottom side (sealant by others).

5. Make wiring connections in wiring box.

