



SIZE

S, M, L

WATT

S : 100 / 150 / 200 M : 240 / 300 L : 400 / 500

CCT

3000K / 4000K / 5000K
OR 4000K / 5000K / 5700K

DIMMABLE

0-10V

CRI

70+

LUMINOUS EFFICACY (Lm/W)

UPTO 160 Lm/W

INPUT VOLTAGE

120-277V or AC 120-480V or
AC 200-480V

IP RATING

IP 65 Rated

OPERATING TEMPERATURE

-40°C ~ +45°C

POWER FACTOR

≥ 0.90

TOTAL HARMONIC DISTORTION (THD)

≤ 20%

LIFE SPAN

50,000+ Hrs

LED SHOE BOX AREA LIGHT

TK-SAL05™ SERIES

DESCRIPTION

schaezer[®] presents the LED Shoebox Area Light, a powerful and efficient lighting solution designed for wide-area illumination in various outdoor settings. This LED shoebox light delivers exceptional performance and energy savings, ideal for commercial and public spaces.

The LED Shoebox Area Light features 0-10V dimming capabilities and options for occupancy and photocell sensors. Constructed with a die-cast aluminum alloy and a durable powder-coated finish, it offers high thermal conductivity and durability. The fixture, equipped with a PC lens, supports multiple input voltages: AC120-277V, AC120-480V, or AC200-480V. Available in color temperatures of 3000K/4000K/5000K or 4000K/5000K/5700K, it delivers up to 160 lumens per watt. With a CRI of 70+, a power factor of ≥0.90, and an operating temperature range of -40°C to +45°C, this IP65-rated light has a lifespan exceeding 50,000 hours.

Ideal for illuminating parking lots, streets, parks, fields, yards, walkways, and roads, this outdoor flood light is perfect for any large open space that requires reliable and bright lighting. Its robust design and high efficiency make it suitable for flood light and LED flood light applications.

Backed by a 5-year limited warranty, the LED Shoebox Area Light complies with UL Listings, DLC Listings, CB, CE Certification, RoHS Compliance, EPC Certification, and is IP65 rated for protection against dust and water.



LED SHOEBOX AREA LIGHT

TK-SAL05 SERIES

Applications

It is suitable for parking lots, street lights, and other open spaces such as parks, fields, yards, walkways, and roads.

Quick Ship:

TK-SAL05-300W-3CCT-TYPE3-M

Controls / Dimming

1-10V Dimmable. The Fixture Comes With The Option of an Occupancy and Photocell Sensors. The Product has a Die-Cast Structure of Aluminum Alloy With High Thermal Conductivity, A Powder-Coated Finish, And A PC Lens.

Warranty

5 Years Limited Warranty

Installation / Mounting

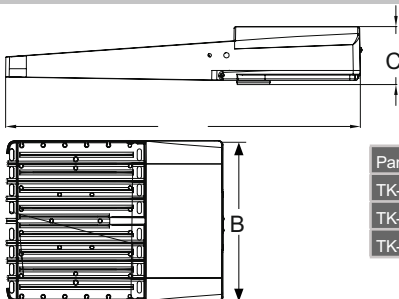
The installation process is straight forward and offers a range of mounting possibilities. SF Bracket, EA Bracket YK Bracket, TR Bracket, TR Bracket

Ordering Information

Example: TECBTA2430W40KD1WP

TK	SAL05	300W	3CCT	TYPE3	PS	BLANK
Code	Series	Watts (wattage selectable)	Color Temp	Beam Angle	Options	Voltage
TK	SAL05- Shoebox Area light Series 5	100W-50W/65W/80W/100W S- 150W-80W/100W/120W/150W 200W-100W/120W/150W/200W M- 240W-120W/150W/200W/240W 300W-150W/200W/240W/300W L- 400W-200W/240W/300W/400W 500W-240W/300W/400W/500W	30K-3000K 3CCT- 40K-4000K 50K-5000K 40K-4000K 3CCT- 50K-5000K 57K-5700K (OPTIONAL)	T2 TYPE II T3 TYPE III T4 TYPE IV T5 TYPE V	[Blank] Standard PS3 - NEMA 3pin Receptacle and Photocell PS5 - NEMA 5pin Receptacle PS7 - NEMA 7pin Receptacle	[Blank] AC100-277V (standard) AC120-480V (optional) AC200-480V (optional) Finish B - Bronze (standard)

Dimensions



Part Number	A (Length)	B (Width)	C (Height)
TK-SAL05-S (100W-150W-200W)	12.32 inches	11.30 inches	2.52 inches
TK-SAL05-M (240W-300W)	16.57 inches	12.20 inches	2.71 inches
TK-SAL05-L (400W-500W)	26.77 inches	12.17 inches	2.80 inches

LED SHOEBOX AREA LIGHT

TK-SAL05 SERIES

Optional Accessories

Single Person Installation (Mounting Options)

This design allows you to easily and securely install the product by sliding and locking it in place.



Slip Fitter Bracket



EA Bracket

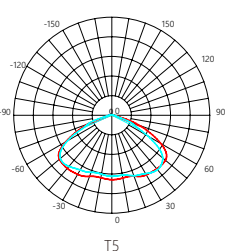
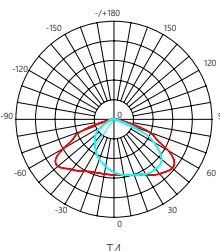
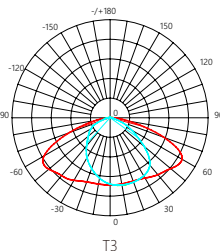
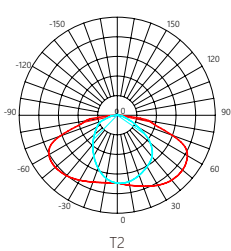


YK Bracket



TR Bracket

Photometrics



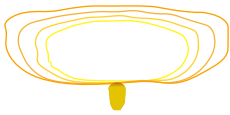
LED SHOEBOX AREA LIGHT

TK-SAL05 SERIES

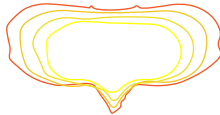
Internal Reflectance Optic Technology

This technology gives better optical control to make the light level more uniform and prevent the loss of light. It has a simple layout and installation that saves poles, energy, installation costs and enhances visibility. It meets the Dark Sky standards with no light spill or glare.

TYPE I



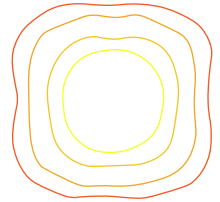
TYPE II



TYPE III



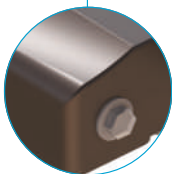
TYPE IV



Light Control Solution(Optional)

1. Cost-Effective Light Controlled Accessories

2. Multi-function Light Controlled Accessories

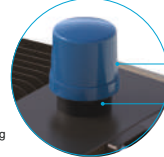


Photocell
3-PIN: Lighting Switch



NEMA+Photocell

3-PIN: Lighting Switch
5-PIN: Expandable DALI or 0-10V Dimming
7-PIN: Expandable DALI and 0-10V Dimming



Photocell
+ NEMA

LED SHOEBOX AREA LIGHT

TK-SAL05 SERIES

Infographics

